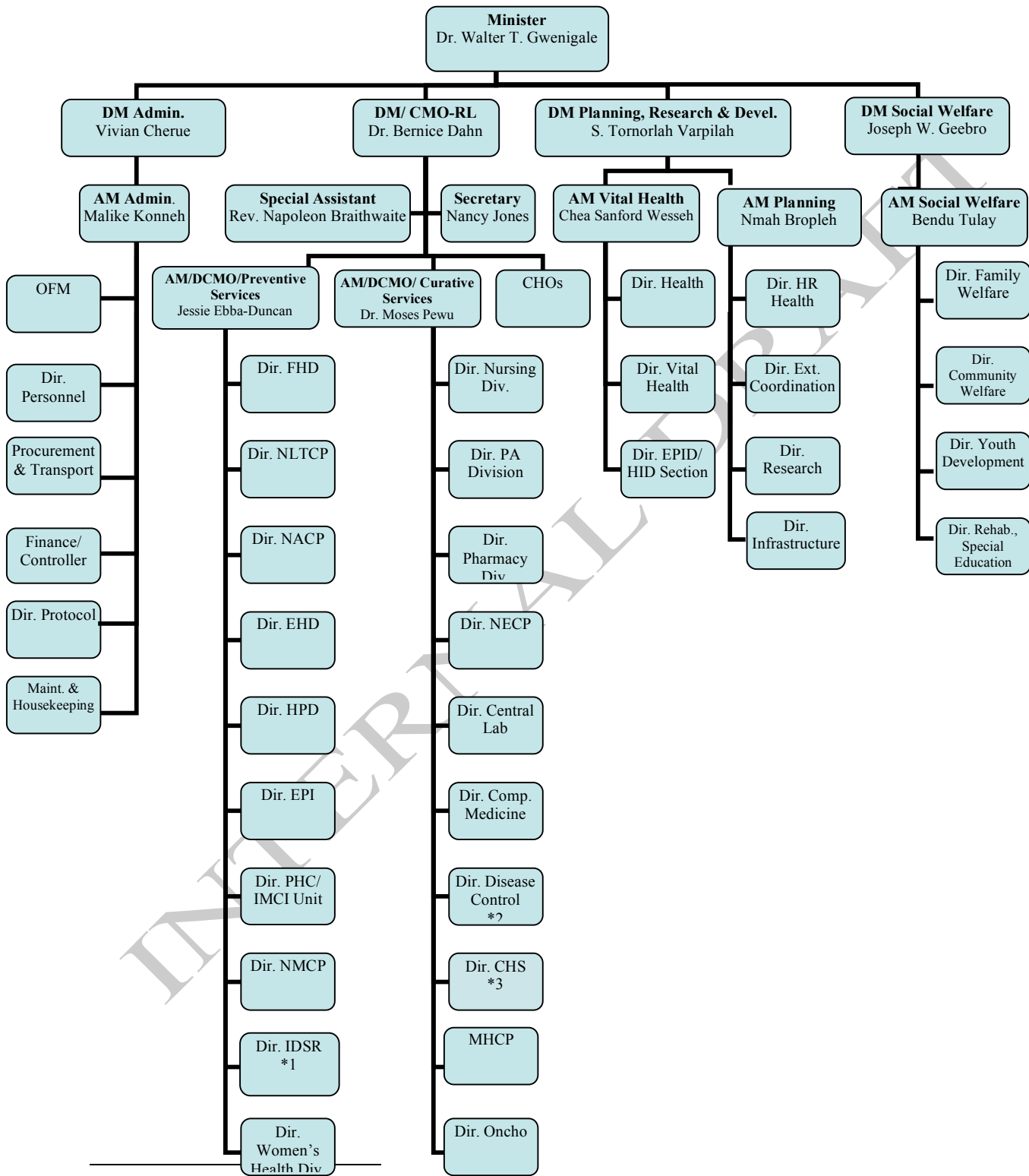


# Ministry of Health and Social Welfare

## Organizational Structure<sup>1</sup>



<sup>1</sup> See following page for list of acronyms. Not official - for reference only.

## Notes to MOHSW organizational chart

---

\*1 = EPR, IHR, Epidemiology, Surveillance, Data Management, etc.

\*2 = Cholera, Rabies, Lymphatic Filariasis, Epilepsy, Lassa Fever, etc.

\*3 = 15 County Health Systems, including 7 Regional Referral Hospitals, all County Hospitals.

## List of acronyms and abbreviations

---

AM	Assistant Minister
CHDD	Community Health Department Director
CHO	County Health Officer
CHSA	County Health Services Administrator
CMO-RL	Chief Medical Officer – Republic of Liberia
DCMO	Deputy Chief Medical Officer
Dir.	Director
Div.	Division
DM	Deputy Minister
DMA	Deputy Minister for Administration
DMP	Deputy Minister for Planning, Research and Development
DMSW	Deputy Minister for Social Welfare
EHD	Environmental Health Division
EPI	Expanded Program on Immunization
EPR	Emergency Preparedness and Response
FHD	Family Health Division
HPD	Health Promotion Division
HR	Human Resources
IDSR	Integrated Disease Surveillance and Response
IMCI	Integrated Management of Childhood Illness
MHCP	Mental Health Care Program
NACP	National AIDS Control Program
NECP	National Eye Care Program
NLTCP	National Leprosy and Tuberculosis Control Program
NMCP	National Malaria Control Program
OFM	Office of Financial Management
PA	Physician Assistant
PHC	Primary Health Care